

Nearmap PhotoMaps™

Nearmap provides high-resolution aerial imagery covering urban areas in the US. Published within days of capture and delivered via web browser or integrated within your preferred GIS or CAD applications, Nearmap empowers anyone in your organization to make the right decisions by seeing what is on the ground now, in great detail, and how it has changed over time.

Each PhotoMaps™ subscription comes with MapBrowser™, our web-based platform designed to help you quickly navigate our timeline of high-resolution aerial imagery. MapBrowser includes easy-to-use line, path, area and volume measurement tools that allow organizations to make accurate estimates and save time and money by reducing the need to deploy people, vehicles, and equipment on-site.

Nearmap is used by thousands of organizations every day for a range of jobs including project management, remote site surveying, business development, risk assessment, quoting, estimating, and auditing.



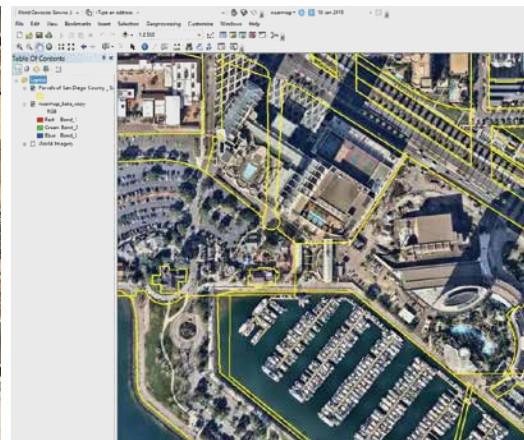
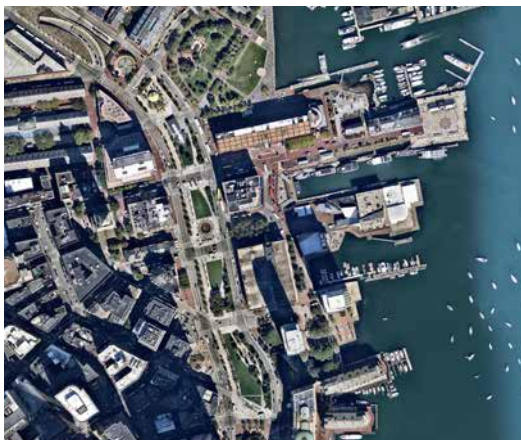
SPECIFICATIONS

Ground Sampling Distance (GSD)	2.8" (7cm)
Absolute Horizontal Accuracy	30" (75cm) RMSE
Horizontal Measurement Accuracy	Measurements under 700': 6" Measurements over 700': 5'
Delivery / Integration standards	MapBrowser, WMS, WMFS, TMS, Esri ArcGIS Image Service, Google Earth Super-Overlay
Datum / Projection	WGS84 / Spherical Mercator
Image Bands	RGB natural color
Image export projections	WGS84 / Spherical Mercator WGS84 / UTM NAD83 / UTM
Image export & georeference file format	jpg, JGW world file
Coverage	~70% of US population*

* Visit <http://go.nearmap.com/coverage> for details.

Current. Clear. Change.

Today, government and commercial organizations need access to the most accurate imagery in support of better planning and streamlined operations. Nearmap delivers that imagery instantly—within days of capture. Our business model is transforming the way people work, reducing site visits and improving accuracy, safety and customer satisfaction.



Amazing High Resolution

Our imagery is better than 2.8" GSD—much clearer than satellite imagery—giving you unrivaled clarity, precision and detail.

Imagery Updated Regularly

We regularly update imagery within days of capture. See changes over time by comparing current and historical imagery.

Powerful Integration

Combine Nearmap's spectacular imagery with powerful analytics using our simple and seamless integration with GIS and CAD tools.



100%
CLOUD-BASED

Instant access
from your desktop
or mobile device.

Make Better Decisions with Clear Aerial Imagery

Nearmap's MapBrowser™ includes a suite of virtual tools for accurate virtual measurements with lines, area, or radius. In addition, GIS analysts requiring advanced features can add data layers and powerful visual insights using Nearmap imagery APIs for seamless integration with Esri's ArcGIS® Platform and CAD-based design programs.



See your world from a new perspective.
Get a demo today.

go.nearmap.com 1-844-463-2762

