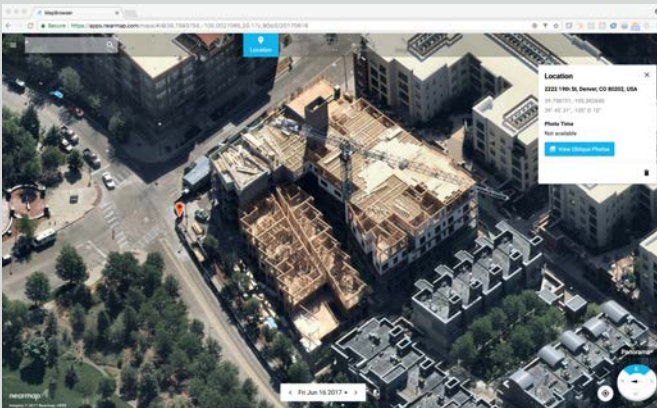


NEARMAP PANORAMA



20 September 2017
Baltimore, MD



PRODUCT SUMMARY

First impressions matter. Your clients need realistic visuals and accurate perspective of your plan, but their worksite and its surroundings are complex. Your team is constantly trying to balance time on-site with critical business goals. Gain and maintain a competitive advantage with actionable, compelling visuals.

Nearmap Panorama™ gives commercial businesses and municipal governments instant access to high-resolution, multi-perspective aerial views of urban areas in the US – allowing you to be everywhere without going anywhere. Our panoramic aerial imagery provides an ultra-clear bird's eye view of locations from each cardinal direction. With uninterrupted pan and zoom capabilities, Nearmap Panorama allows you to visualize reality, create stunning proposals, inspect remotely, and analyze detailed ground features.

Each Nearmap Panorama™ subscription includes access to Nearmap Vertical, our high-resolution ortho imagery, along with MapBrowser™, a web-based application for searching and navigating Nearmap's library of current and historical aerial photos. MapBrowser includes powerful, intuitive tools for measuring, designing, and analyzing locations.

KEY FEATURES



INTELLIGENT SEARCH

- Intelligent search by address, point of interest, or lat/long geolocation
- Locate Me feature for convenient geo-locating in the field



FLEXIBLE VIEW

- Multi-perspective views from each cardinal direction
- Smooth, unrestricted panning & zooming



PRECISE MEASUREMENT

- Accurate measurement of line, area, & radius* with instant unit conversion
- Dynamic adjustment of drawings & measurements



RICH VISUAL ANALYSIS

- Access to current & full historical imagery archive
- View and compare change in images over time with Split View



PURPOSE-BUILT EXPORT

- Save images for use in proposals and communications
- Include or exclude measurements*



POWERFUL INTEGRATION

- APIs allow easy & seamless integration of Vertical imagery as base layer within GIS, CAD and 3rd-party applications*
- Panorama Tile API allows integration of Panorama imagery with custom applications

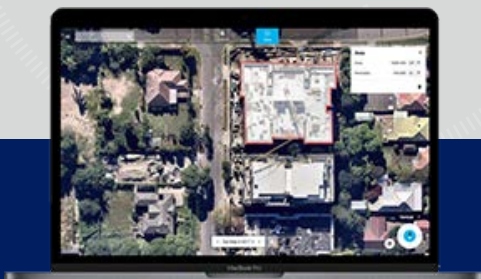
SPECIFICATIONS

PANORAMA SPECIFICATIONS

Ground Sampling Distance (GSD)	3" or 7.5cm
Datum / Projection	WGS84 / Spherical Mercator
Image Bands	RGB Natural Color

VERTICAL SPECIFICATIONS

Ground Sampling Distance (GSD)	3" or 7.5cm
Absolute Horizontal Accuracy	2'6" or 75cm RMSExy
Horizontal Measurement Accuracy	6" or 15cm within one photo (30" or 76cm between photos)
Datum / Projection	WGS84 / Spherical Mercator
Image Export Projection	WGS84 / Spherical Mercator WGS84 / UTM NAD83 / UTM GDA94 / UTM
Image Bands	RGB Natural Color



* Feature only available for Nearmap Vertical imagery

GET A DEMO TODAY

1.844.463.2762 | nearmap.com

